

Exceptional Design

- Rear or front lift options with adjustable spacing for versatility in weight distribution
- Numerous baffles ensure a smooth ride and less damage from liquid slosh

Safety & Quality

- Standard feature set delivers OSHA-compliant, cutting-edge safety features
- 101+ point quality control checklist delivers the best-in-class product

Customization

- The Manitex Sabre on-site engineering team collaborates with you to build the product that best meets your needs



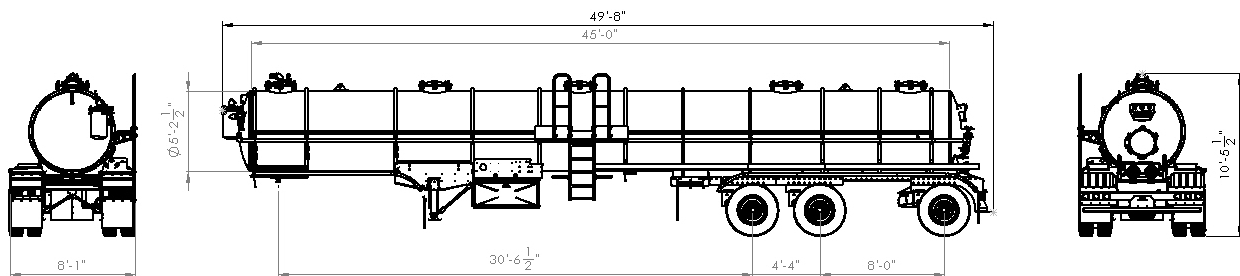
SPECIFICATIONS

Trailer Specs	VTR 150	VTR 160	VTR 165	Exterior Finish	Std	Opt	Interior Liner	Std	Opt
Barrel length	39' - 0"	42' - 0"	45' - 0"	Sandblast	SP6		Sandblast	SP10	
Barrel diameter	5' - 0"	5' - 2"	5' - 2"	Prime	•		Epoxy (2 part, 200*)	•	
Trailer length	42' - 6"	45' - 6"	48' - 6"	Polyurethane	•		Other liners		•
Trailer width	8' - 0"	8' - 0"	8' - 0"	Arctic White	•				
Trailer height	9' - 0"	9' - 0"	9' - 0"	Silver Metallic		•			
Capacity (BBLs/Gals)	150/6,300	160/6,720	165/6,930	Other finishes		•			

OPTIONS & FEATURES: VTR 150/160/165

STANDARD OPTIONS	Qty	Std	Opt
VESSEL CONSTRUCTION & FEATURES			
1/4" Carbon steel barrel with 1/4" ASME F & D Heads	1	•	
T-Ring reinforcements (& component connection points)	10	•	
Dished baffles (A36, designed to resist fatigue cracking)	3/4	•	
Top manways (20" diameter, with gaskets & greased lube nuts)	4/5	•	
20" rear head manway (Front manway optional)	1	•	
Sumpbox with (2) 4" NPT butterfly valves & catch basin	1	•	
SUSPENSION, SYSTEM, WHEELS & UNDERBODY			
30,000 lb. air ride adjustable axles (1 ABS, 1 non-ABS)	2	•	
Lift axle w/local & cab-activated lift control box	1	•	
22.5 steel, hub-piloted wheels with chip/cut-resistant radials	12	•	
22.5/24.5 steel or aluminum hub-piloted wheels	12		•
Fifth-wheel kingpin (adjusts to alter load distribution/bridges)	1	•	
Holland (or equivalent) landing legs with cross braces, ext. crank	1	•	
VACUUM SYSTEM FEATURES			
Primary scrubber with stainless steel float, pressure/vacuum relief	1	•	
Secondary moisture trap, 10 gallon, 300 CFM with 1" drain	1	•	
2" blowdown line with pressure/vacuum gauge and valve	1	•	
Vacuum pump package with mounting kit, oil catch muffler, hoses	1		•
HOSETRAY OPTIONS			
Full length (and other widths & lengths)	2	•	
16" wide, steel, with drainage (25 "0" length)	2	•	
20" wide, steel, with drainage (28 "0" length)	2		•

ADDITIONAL OPTIONS	Qty	Std	Opt
VISUAL FILL INDICATORS			
Stainless steel float ball with arrow gauge and legend	1		•
5" clear sight glass with gasket, washer and threaded bolt	1		•
1-1/2" diameter vertical sight tube at rear head with (2) ball valves	1		•
Digital sensors (various models)	1		•
TOOLBOX OPTIONS			
24" wide x 18" x 18" aluminum, undermount (sealed & lockable)	1	•	
36" and 48" aluminum (multiple toolbox options)	1-2		•
COLD WEATHER OPTIONS			
Sets of 3 chained hangers	2		•
Valve heaters with wiring harness	2		•
ACCESS LADDERS & WALKWAYS			
Full length 12" galvanized Grip-Strut walkway with rear access steps	1		•
OSHA-compliant safety rail system	1		•
Barrel-welded manway ladders and other access options	1-4		•
ELECTRICAL SYSTEM & SAFETY PACKAGE			
D.O.T. approved LED package with 2"/4" round and 6" oval lamps	1	•	
Turn signals and return ground system	1	•	
LED worklights mounted on rear head	2	•	
Additional LED worklights on trailer sides	1-8		•
Wiring run (to gladhand plate) for air bag dump switch	1		•
Wiring run (to gladhand plate) for lift axle switch	1		•
D.O.T. approved reflective tape and OSHA warning decals	1	•	



MODEL SHOWN: VTR-165